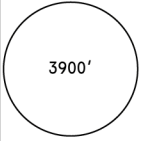
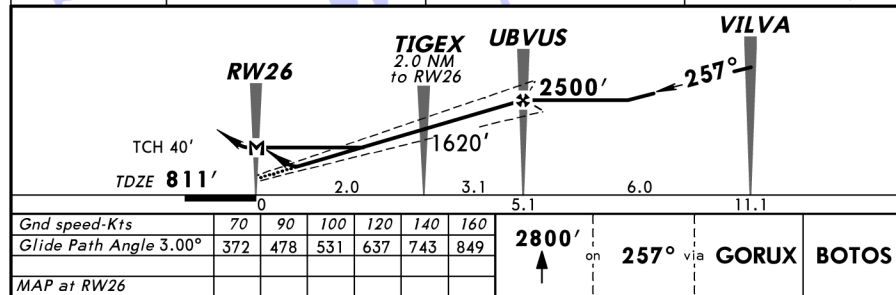
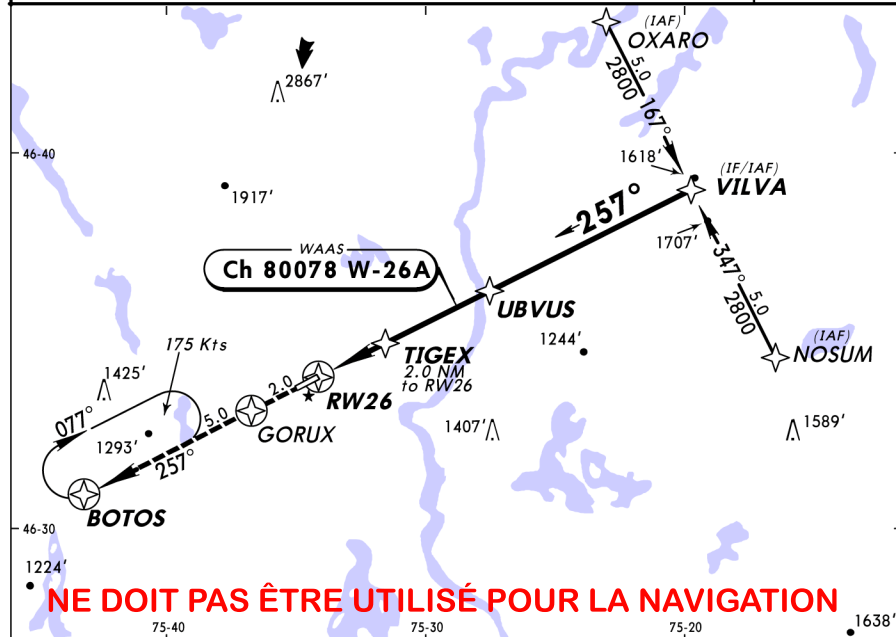


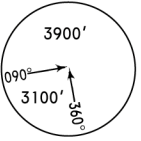
CSD4
MONT-LAURIER
 9 NOV 12 (12-1) **Eff 15 Nov** (GNSS)RNAV Rwy 26

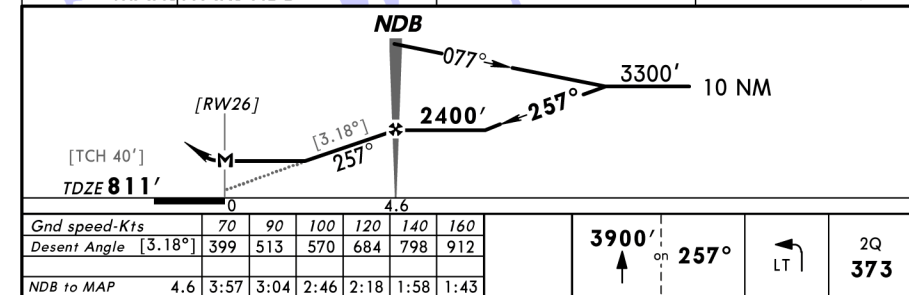
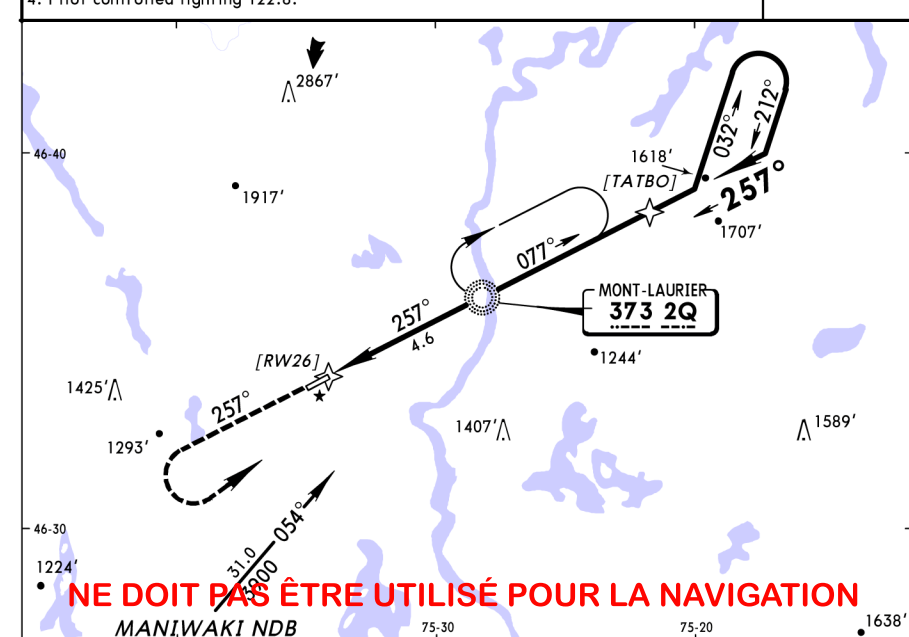
AWOS (Pvt) 129.07 (French 123.42)	MONTREAL Center 126.57	QUEBEC Radio (DRCO) Dial-up Remote Communications Outlet (DRCO) 122.1	*MONT-LAURIER UNICOM ATF 122.8	MONT-LAURIER Traffic ATF 122.8 when UNICOM inop.
WAAS Ch 80078 W-26A	Final Apch Crs 257°	Minimum Alt UBVUS 2500' (1689')	LPV DA(H) 1070' (259')	Apt Elev 815' TDZE 811'
MISSED APCH: Climb to 2800' on track of 257° via GORUX to BOTOS. Shuttle climb to 3400 before proceeding on course.				 <p>3900'</p> <p>MSA RW26</p>
Alt Set: INCHES Trans level: FL 180 Trans alt: 18000' 1. CAUTION: Procedure overlaps Maniwaki (CYMW) procedures. Common frequency 122.8. 2. When using Ottawa/Gatineau (CYND) altimeter setting available limited hours or Ottawa/ Macdonald-Cartier Intl (CYOW) altimeter setting add 230' to all procedure altitudes. 3. SAFE ALTITUDE WITHIN 100 NM 5300'. 4. Runway 26 assessed for aircraft wingspans less than 79'. 5. Pilot controlled lighting 122.8.				



STRAIGHT-IN-LANDING RWY26	
LPV DA(H) 1070' (259')	LNAV MDA(H) 1240' (429')
A	
B	
C	1
D	1 1/4

CSD4
MONT-LAURIER
 9 NOV 12 (16-1) **Eff 15 Nov** (GNSS)NDB Rwy 26

AWOS (Pvt) 129.07 (French 123.42)	MONTREAL Center 126.57	QUEBEC Radio (DRCO) Dial-up Remote Communications Outlet (DRCO) 122.1	*MONT-LAURIER UNICOM ATF 122.8	MONT-LAURIER Traffic ATF 122.8 when UNICOM inop.
NDB 2Q 373	Final Apch Crs 257°	Minimum Alt NDB 2400' (1589')	MDA(H) 1680' (869')	Apt Elev 815' TDZE 811'
MISSED APCH: Climb to 3900' on track of 257°. LEFT turn direct to 2Q NDB.				 <p>3900'</p> <p>MSA 2Q NDB</p>
Alt Set: INCHES Trans level: FL 180 Trans alt: 18000' 1. CAUTION: Procedure overlaps Maniwaki (CYMW) Procedures common frequency 122.8. 2. SAFE ALTITUDE WITHIN 100 NM 5300'. 3. Runway 26 assessed for aircraft wingspans less than 79'. 4. Pilot controlled lighting 122.8.				



STRAIGHT-IN-LANDING RWY26	
NDB	MDA(H) 1680' (869')
A	
B	
C	2 1/2
D	